



CENERGI REFUEL SDN BHD (“CREF”)

INFO PACK – NOVEMBER 2024

Cenergi Refuel (CReF)

About

Cenergi ReFuel Sdn Bhd (“CReF”) was incorporated on **16 November 2017** in Malaysia with registration number 201701041888 (1256061-U)

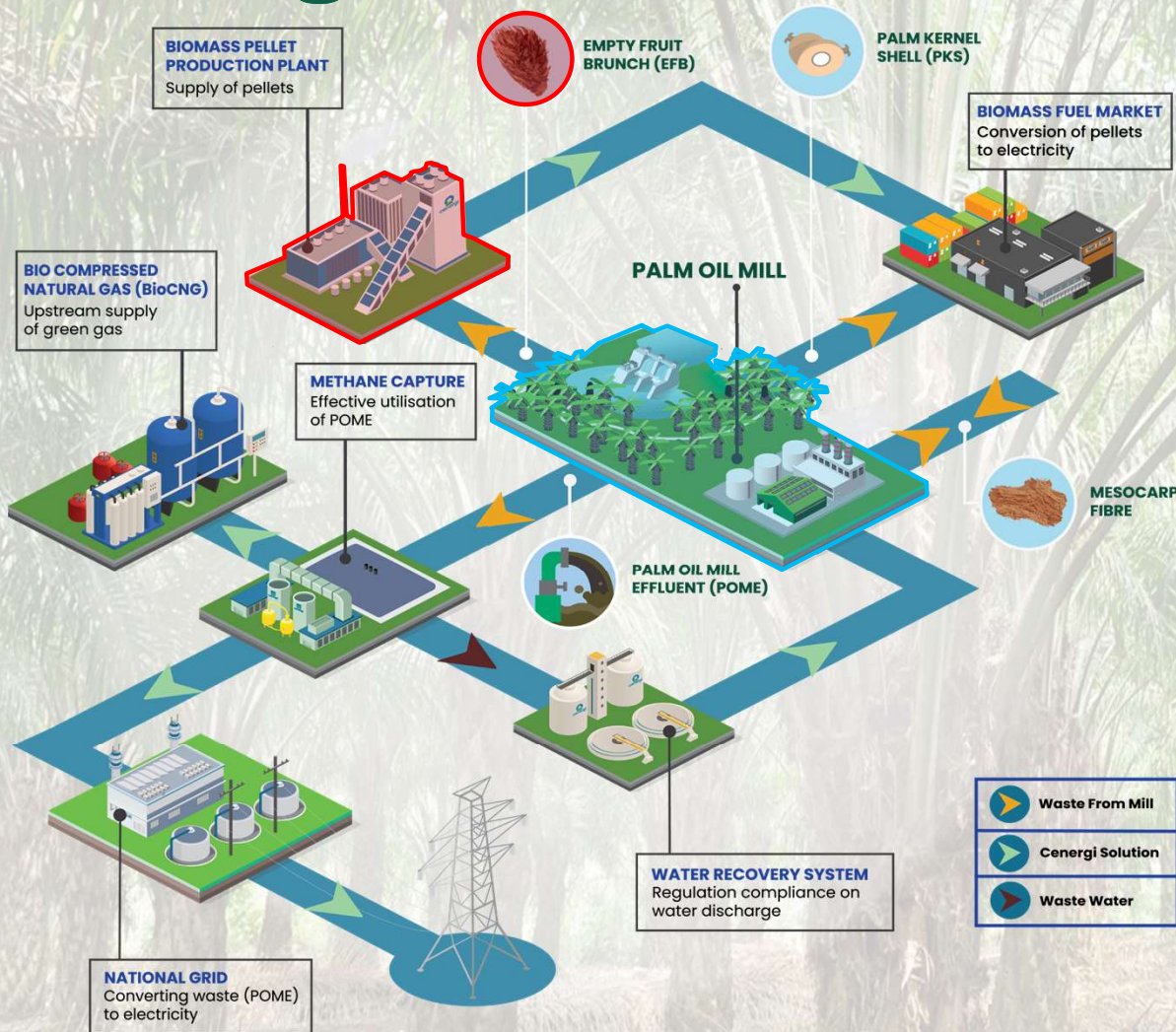
CReF is a wholly-owned subsidiary of Cenergi SEA Berhad (“CSEA”), a premier sustainable energy solutions company specializing in reducing carbon footprint through investment in Renewable Energy and Energy Efficiency projects.

Our businesses:

- Develop, build/refurbish, own and operate biomass pellet plant
- Manufacture and sell biomass pellets to local and international markets



Cenergi Business Overview

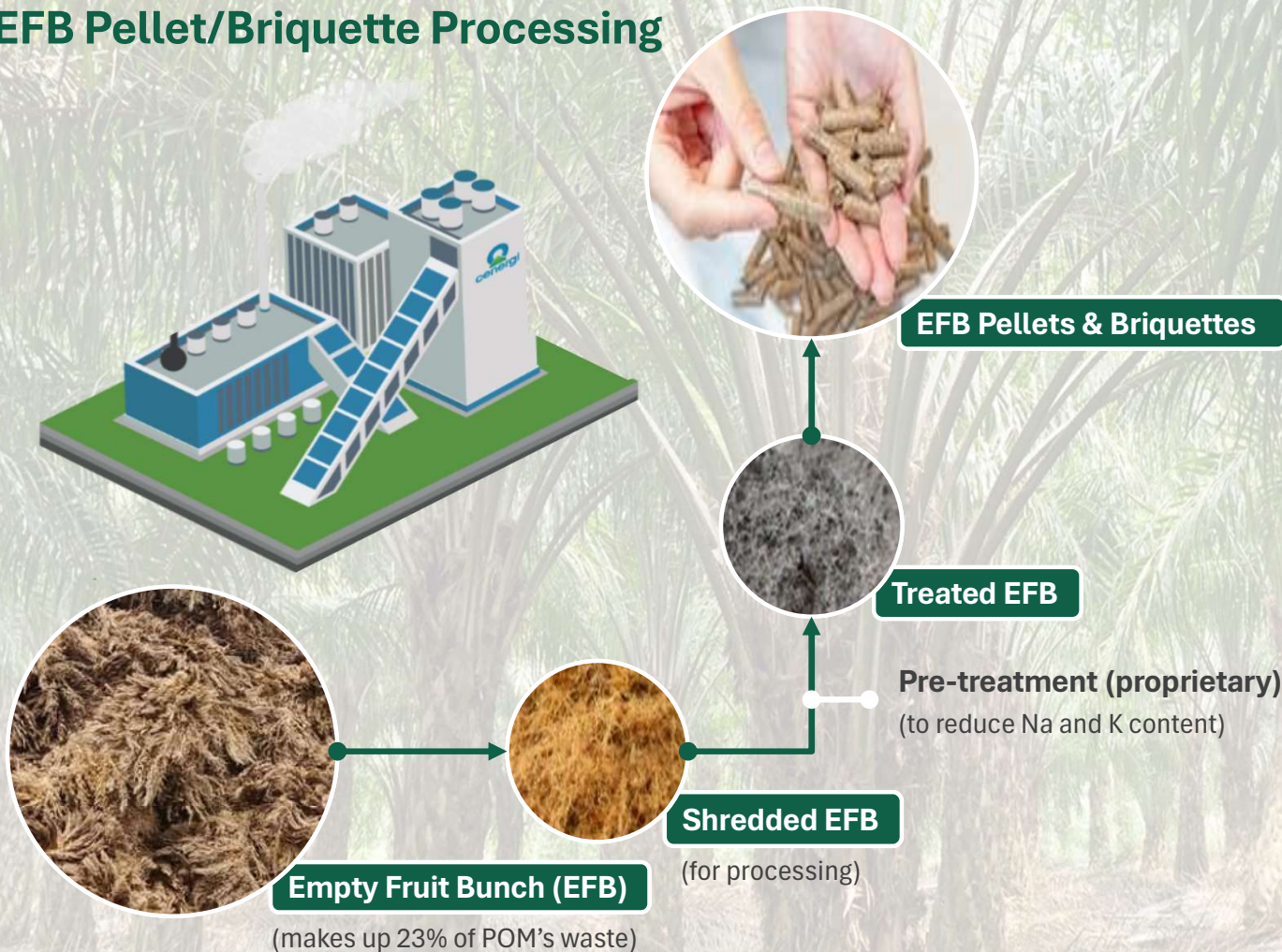


EFB Business

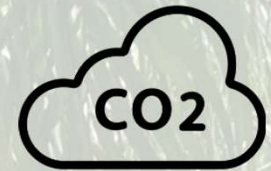
- **Empty Fruit Bunch ("EFB") Pellets and Briquettes** as **sustainable biomass fuel** provides an additional solution to Malaysia's RE potential, whilst unlocking the value of an underutilised by-product of the palm oil mill.
- With **rising global demand** for sustainable biomass fuel, Cenergi has invested into EFB Pellet and Briquette business.
- EFB Pellets and Briquettes can be **co-fired** with primary fuel in **coal combustion systems** with the potential of displacing up to **5-15% of coal**.

CReF Business Overview

EFB Pellet/Briquette Processing



Sustainability Impact



Contributes to Malaysia's low carbon ambitions

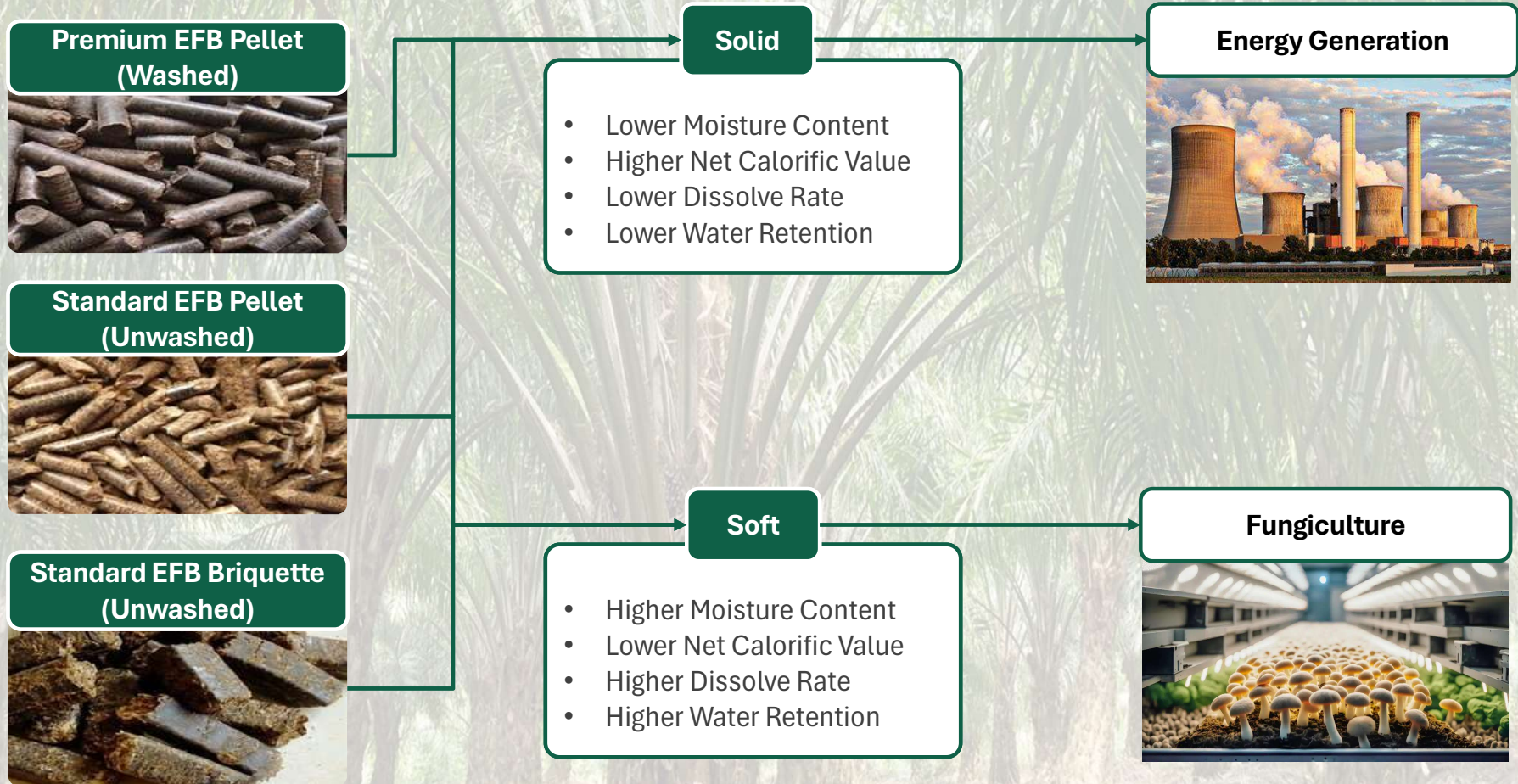
Utilizing renewable fuel Reduces CO₂ emissions from coal-fired power plants



Mitigates release of methane from under-utilized EFB

Effective utilization of an indigenous resource

CReF Products & Applications

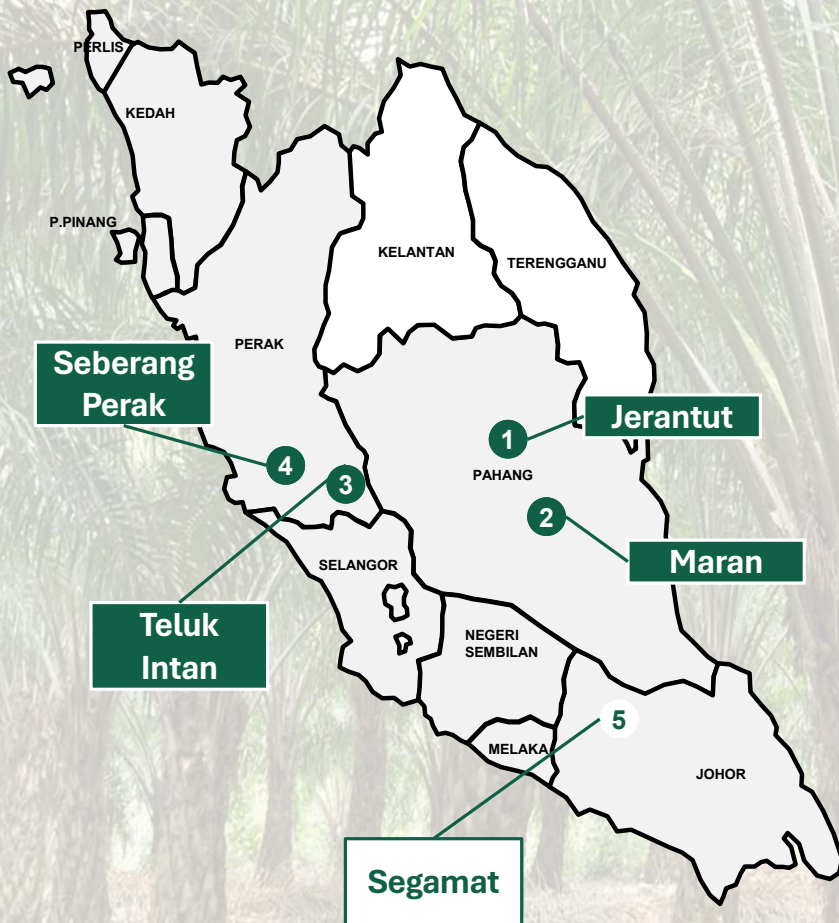


CReF Product Specifications



| Product | Premium Pellet | Standard Pellet | Standard Briquette |
|-----------------------------------------------------|-------------------------------------|---------------------------------------------------------|------------------------------------------------------------|
| Chemical Concentration (ppm) Sodium Potassium | < 2,000 ppm | ≥ 2,000 ppm | ≥ 2,000 ppm |
| Net Calorific Value (kcal/kg) | 3,900 – 4,100 | 3,900 – 4,100 | 3,900 – 4,300 |
| Dissolve in water | Solid: More than 3 minutes | Solid: More than 3 minutes Soft: Less than 3 minutes | Solid: More than 2 weeks Soft: Less than 3 minutes |
| Moisture Content (% wt) | < 10 | < 10 | < 10 |
| Ash Content (% wt) | ≤ 3 | > 3 | > 3 |
| Size | Diameter: 6-8 mm Length: ≤ 32 mm | Diameter: 6-8 mm Length: ≤ 32 mm | 30 mm x 30 mm / 18 mm x 18 mm Length: can be customized |
| Market Application | Fuel | Fuel and Fungiculture | Fuel and Fungiculture |
| Market | Oversea, Local | Oversea, Local | Oversea, Local |

CReF Plant Locations



1

FJP 1 | 2.0 Tph



3

TIP | 2.0 Tph



5

SBP | 4.5 Tph



2

FMR | 3.0 Tph



4

FSP | 3.0 Tph

Pellet Capacity
10 MT/hr

Briquette Capacity
6.5 MT/hr



Thank you



@cenergisea

www.cenergi-sea.com | info@cenergi-sea.com | +603 5885 0454